

EUREKA CANOPIES

BUYERS GUIDE



Thomastown,
Victoria, 3074



0422 534 789
1800 887 880



eurekacanopies.com.au



ABOUT US

CANOPY & TRAY SPECIALISTS

Eureka Canopies is a proudly Australian owned, family run business dedicated to creating tough, practical storage solutions for utes across the country. Every product we offer from toolboxes and canopies to dog boxes and accessories is fully designed in house by our team, with a focus on quality, durability, and real world functionality.

Founded in 2017, we started with a simple goal to provide reliable, secure storage for tradies. But it didn't take long to realise that our gear was just as essential for campers, hunters, 4x4 enthusiasts, and everyday ute owners. Today our range has grown to become one of the most extensive in Australia and we're still evolving.

With over 40 years of experience in the building industry before launching Eureka Canopies, we understand what our customers need and we deliver it at unbeatable value. Whether you're working hard or heading off the beaten track, our products are built to go the distance.



NAVIGATION

- [→ The Premium Tray](#) Page 3

- [→ The Tradie Tray](#) Page 4

- [→ Canopies](#) Page 5

- [→ Bracing](#) Page 6

- [→ Toolboxes](#) Page 7

- [→ Additional Storage Systems](#) Page 8

- [→ Roof Racks](#) Page 9

- [→ Package Deals](#) Page 10

- [→ Accessories](#) Page 11

- [→ Custom Canopies](#) Page 12

PREMIUM 4 X 4 TRAY



Heavy duty performance, lightweight design.

Our new Heavy Duty Tray is built from premium aluminium to deliver exceptional strength, without adding unnecessary weight.

Over-engineered with durability in mind, it's designed to handle heavy loads and harsh off road conditions.



KEY FEATURES

- **Universal fit** with brackets to suit all major makes and models
- **Reinforced aluminium frame** with 5mm C-channel, 40x40mm sub-frame and a 5mm checker plate floor
- **70mm framed headboard** with mesh window protection
- **Full-length tie down rails** with laser-cut notches
- **Adjustable 3mm wheel guards** with mud flaps
- **ADR approved Maxi LED tail lights** with number plate light
- **Undertray toolboxes** fitted with whale tail locks
- **Relocation kit** for factory camera, reverse sensor and/or BSM
- **Choice of finish** in checker plate or flat plate

OPTIONAL EXTRAS

- 1 Trundle drawer**
- 2 Fold-down tray sides** with latches
- 3 70 x 50mm framed rear bar** to match headboard profile
- 4 Custom fit-out** with canopy and toolbox add-ons or packages available
- * **Powder coating** available in our extensive range of colors
- * **Professional installation**, including tub removal

TRAY DIMENSIONS

Overall Length	Deck Length	Width	Height	Custom Sizes Available
1870m	1800m	1800m	860m	✓

Essential strength, everyday value.

Our original Tradie Tray is built for practicality, strength, and affordability, offering a solid, no-fuss platform for everyday use.

Crafted from quality aluminium, it's a reliable choice for tradies and fleet users who value simplicity and long-term durability.

THE TRADIE TRAY



KEY FEATURES

- **Universal fit** with brackets to suit all major makes and models
- **65mm round tube headboard** with mesh window protection
- **Standard tie down rails** along full-length of tray
- **Adjustable wheel guards** with mud flaps
- **Standard LED tail lights** with protectors and number plate light
- **Relocation kit** for factory camera, reverse sensor and/or BSM

TRAY DIMENSIONS

Overall Length	Deck Length	Width	Height
1580mm	1500mm	1800mm	900mm
1880mm	1800mm	1800mm	900mm
2180mm	2100mm	1800mm	900mm
2480mm	2400mm	1800mm	900mm

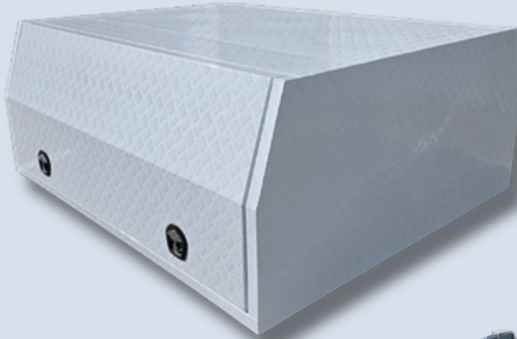


OPTIONAL EXTRAS

- 1 Trundle drawer** with load rating of 100kg
 - 2 Fold-down tray sides** with latches
 - 3 65mm round tube rear bar** to match headboard profile
 - 4 Undertray box**
- * **Custom fit-out** with canopy and toolbox add-ons or packages available
 - * **Powder coating** available in our extensive range of colors
 - * **Professional installation**, including tub removal

CANOPIES OPTIONS

STANDARD CANOPY



KEY FEATURES

- **Heavy-duty 40x40mm frame** with gusset reinforcement
- **2.5mm aluminium construction** for strength and durability
- **Gas struts** for smooth, controlled door operation
- **Rubber seals** for a weather & dust resistant fit
- **Choice of finish** in checker plate or flat plate
- **2-door or 3-door configurations** available
- **Optional powder coating** in custom colours
- **Range of sizes** available

LIFT-OFF CANOPIES

KEY FEATURES

- **Fully reinforced floor** supporting up to 500kg when off the tray
- **Lift-off mounting points** built in for easy removal
- **Legs and mounting clamps** are available as optional extras



Upgrade any canopy with an **electric lock kit** that locks & unlocks with your factory key

CANOPIES WITH DOGBOX

KEY FEATURES

- **Dedicated dog compartment** with **mesh doors** for airflow and visibility
- **Smooth internal edges** for pet safety and comfort
- **Available in single or double box configurations**
- **Lift-off option available** on select sizes



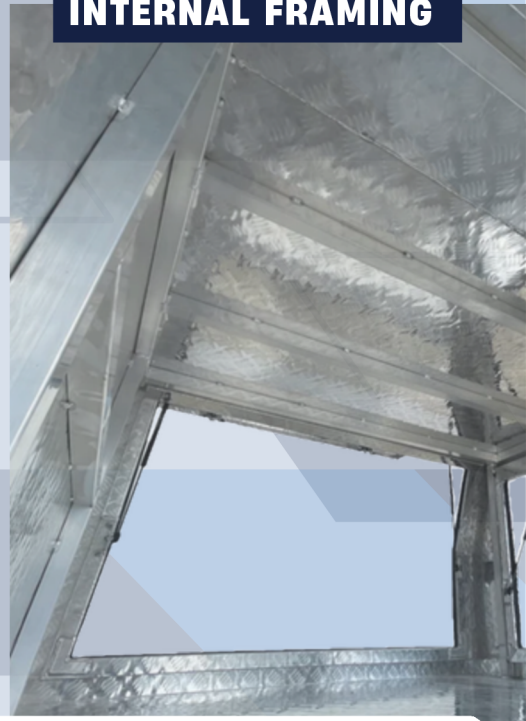
CANOPY BRACING

UNI STRUT



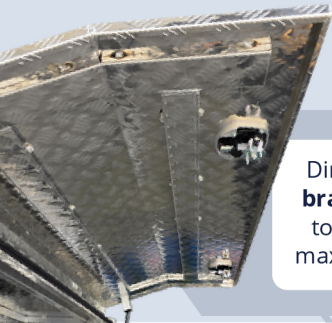
Optional **Uni Strut** bracing is available on select canopy sizes, providing flexible mounting points for shelving, drawers and accessories while adding extra structural strength.

INTERNAL FRAMING



Every canopy features **heavy-duty 40 × 40mm** internal bracing with **reinforced corner gussets**, ensuring maximum rigidity, durability and long-term strength in tough conditions.

DOOR BRACING CHECKER PLATE CANOPIES



Direct **C-channel bracing** is welded to each door for maximum support.

DOOR BRACING FLAT PLATE CANOPIES



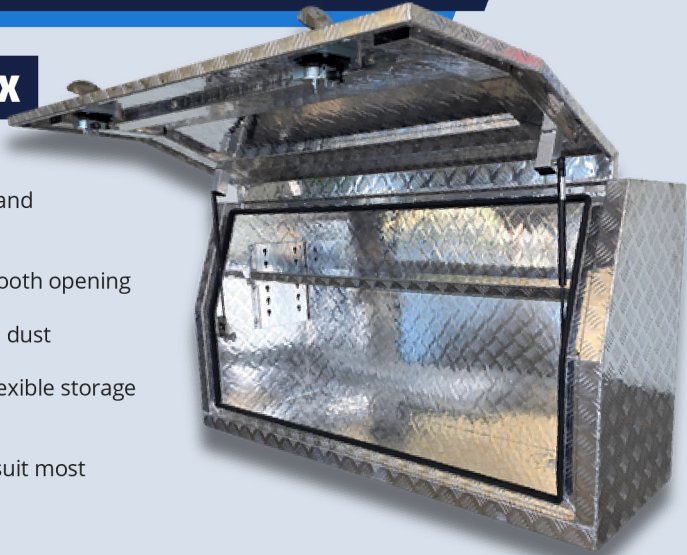
Round pipe bracing is used to avoid visible weld marks on the door face.

TOOLBOX OPTIONS

STANDARD TOOLBOX

KEY FEATURES

- **Full-height access** for stacking and heavier gear
- **2.5mm aluminium** thickness
- **Gas strut-assisted door** for smooth opening & closing
- **Rubber door seal** for water and dust resistance
- **Adjustable internal shelf** for flexible storage
- **Checker or flat plate finish**
- Optional powder coating
- Available in a **range of sizes** to suit most vehicles



HALF DOOR



KEY FEATURES

- **Same standard features** as the full door toolbox
- **Lower door profile** for tray-side clearance
- **Ideal for compact setups** or raised tray sides

WITH DRAWERS



KEY FEATURES

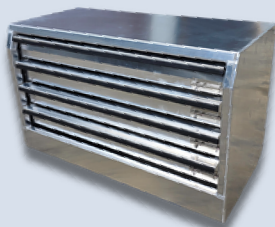
- **Same standard features** as the full door toolbox
- **Three internal drawers** for organised tool storage
- **Multiple size options** available

CANOPY & TOOLBOX STORAGE

DRAWER INSERT BOXES



★ **SMALL**
580L x 420W x 530H

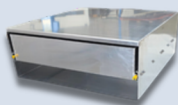


★ **LARGE**
900L x 420W x 530H

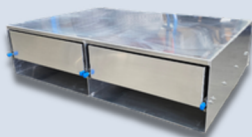


★ **X LARGE**
900L x 500W x 700H

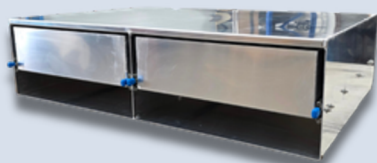
SLIDE OUT DRAWERS



★ **SINGLE DRAWER**
800L x 800W x 300H



★ **DOUBLE DRAWER**
1200L x 800W x 300H



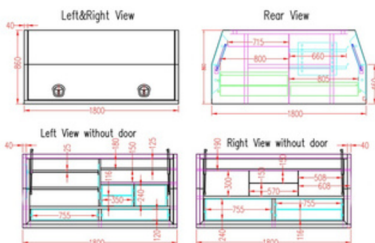
★ **LARGE DOUBLE DRAWER**
1550L x 800W x 300H

NEED SOMETHING CUSTOM?

At Eureka Canopies we believe your setup should perform exactly how you need it to.

We design and manufacture custom shelves, drawer systems, insert boxes, and specialised storage solutions tailored to suit your vehicle and application.

Every system is precision built to your exact needs and specifications.



ROOF RACKS & BARS

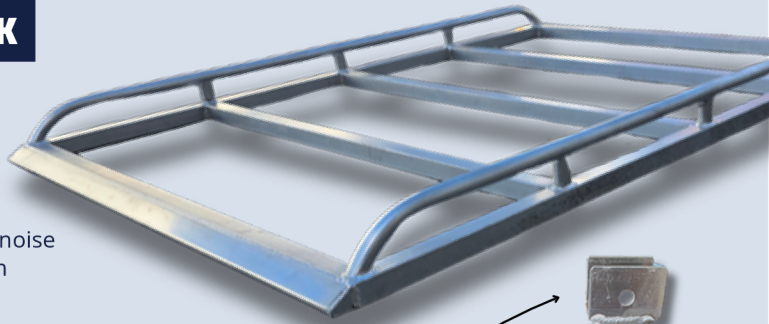
FULL ROOF RACK

KEY FEATURES

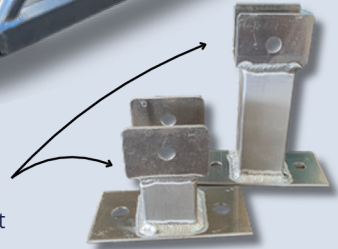
- **Heavy-duty 40x40mm aluminium tubing** with 3mm thickness
- **Windbreaker** to reduce noise
- **Internal width:** 1220mm

AVAILABLE SIZES

- 1800 x 1300 mm
- 2400 x 1300 mm
- 2700 x 1300 mm
- 3000 x 1300 mm



Bolt-on mounting legs
55mm or 110mm height
No welding required



ROOF BARS

- **Compact alternative to full racks** for lighter loads
- **40x40mm aluminium tubing**, with 3mm thickness
- **Leg height options:** 55mm or 110mm
- **Internal width:** 1460mm
- **External width:** 1540mm

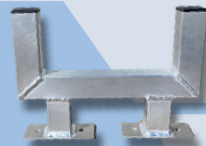


ROOF RACK ROLLER



- Seamlessly glide your ladders onto your roof rack
- 47mm diameter roller
- Spans the full width of our roof racks
- 1220mm in length

MINI ROOF BAR



- 40x40mm aluminium tubing, with 3mm thickness
- **Internal width:** 215mm
- **External width:** 300mm

TRAY & CANOPY PACKAGES

E1 - TRAY + FULL CANOPY PACKAGE

THIS PACKAGE INCLUDES:

- **4x4 Premium Tray:** 1800 × 1800mm (Flat or Checker)
- **Canopy:** 1800 × 1800 × 860mm (Flat or Checker, 2 or 3 Door)
- **Roof Rack:** 2400mm (Choice of Leg Height)
- **Undertray Toolboxes (Pair):** 900mm (Flat)
- Electric Whale Tail Locks on Canopy Doors



E7 - TRADIE TOOLBOX PACKAGE

THIS PACKAGE INCLUDES:

- **Tradie Tray:** 1800 × 1800mm
- **1 x Toolbox with 3 Drawers:** 1750 × 600 × 860mm (Flat or Checker)
- **1 x Full Door Toolbox:** 1750 × 500 × 860mm (Flat or Checker)
- **Roof Rack:** 2400mm (Choice of Leg Height)
- **Gate:** 680mm With Whale Tail Lock
- **Undertray Toolboxes (Pair):** 900mm (Flat or Checker)
- **Electric Whale Tail Locks** on Toolbox Doors



E3 - TRAY + HALF CANOPY PACKAGE

THIS PACKAGE INCLUDES:

- **4x4 Premium Tray:** 1800 × 1800mm (Flat or Checker)
- **Canopy:** 1200 × 1800 × 860mm (Flat or Checker)
- **Undertray Toolboxes (Pair):** 900mm (Flat)
- **Tray Sides set:** Full length
- **Rear Bar:** With brackets
- **Electric Whale Tail Locks** on Canopy Doors



Scan here to see all available Eureka Canopies Package Deals

ACCESSORIES

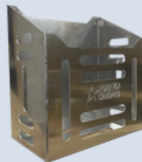
Eureka offers a wide range of accessories and upgrades to enhance or modify your setup. From electric locks and tray-side customisation to retrofitting trundle drawers or simply making adjustments to existing builds.



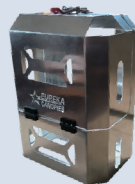
ELECTRIC LOCKS



FOLD DOWN LADDER



JERRY CAN HOLDER



JERRY CAN HOLDER LOCKABLE



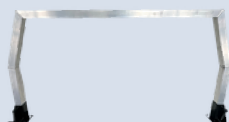
LIFT-OFF CANOPY LEGS



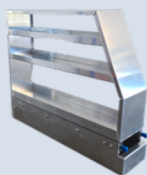
LIFT-OFF TIE DOWN CLAMPS



RUBBER MATTING



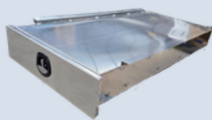
REAR BAR



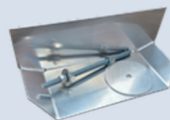
SLIDE OUT PANTRY



TOOLBOX GATE



TRUNDLE DRAWER



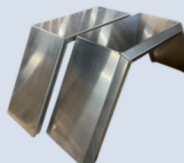
TYRE HOLDER - ALUMINIUM



4X4 TYRE HOLDER - STEEL



UNDERTRAY BOXES



WHEEL ARCHES



WINDOWS



CUSTOM ***Canopies & Toolboxes***

YOUR SPECS, YOUR STYLE

Not every vehicle or job is the same, that is why we offer custom-built trays, canopies, toolboxes, roof racks, and accessories, tailored to suit your individual needs.



CONTACT US TODAY



Scan the QR code then complete the form and we'll begin designing your ideal setup.



EUREKA CANOPIES



EUREKA CANOPIES



EUREKA CANOPIES

Please feel free to reach out to us if you have any questions about our products and services.

Our Thomastown warehouse is available for you to visit during standard business hours, which includes most Saturdays.

Scan the QR codes below to see our socials

SCAN HERE



SCAN HERE



SCAN HERE



**14 Cliveden Court
Thomastown, VIC. 3074**



**0422 534 789
1800 887 880**